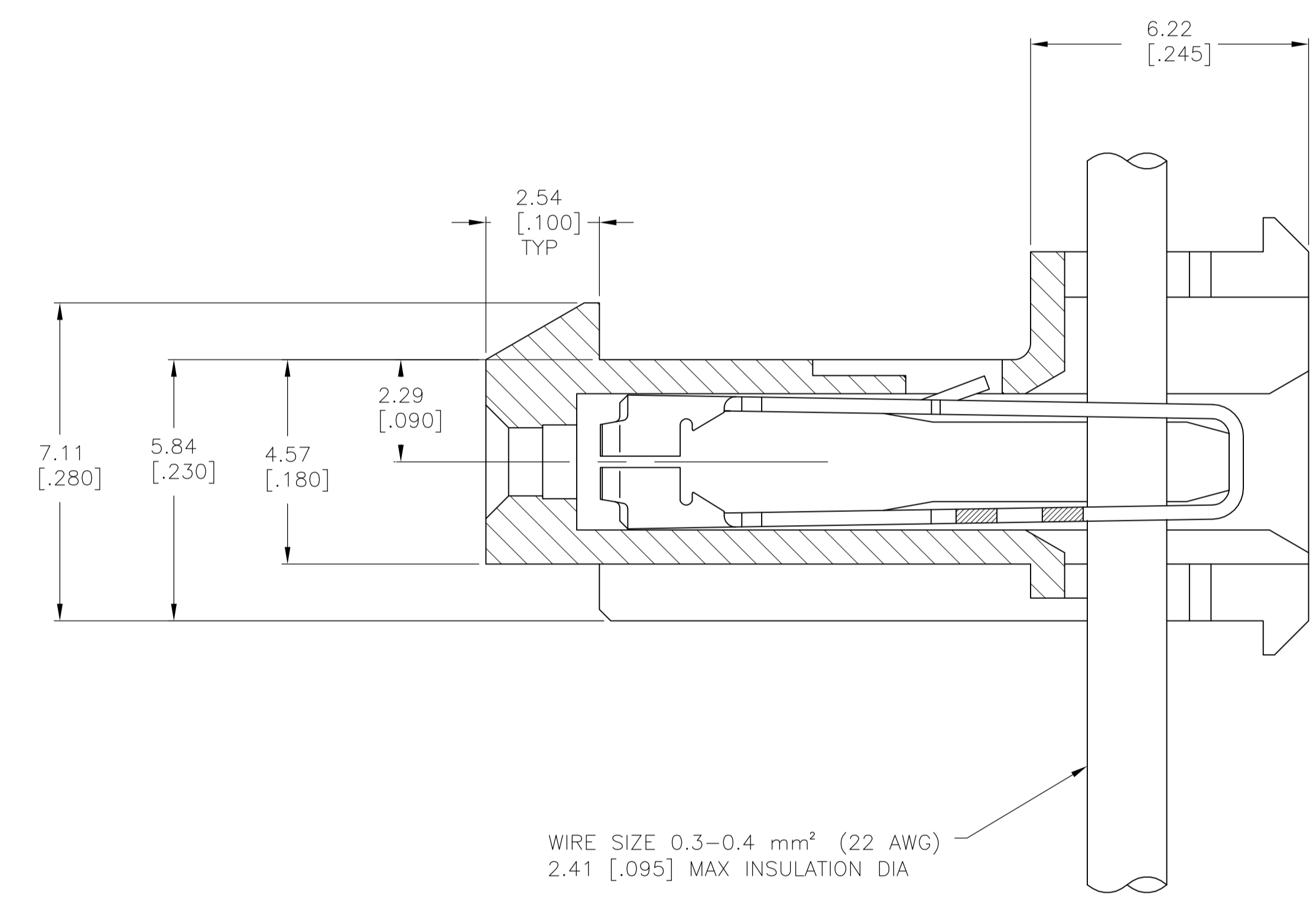
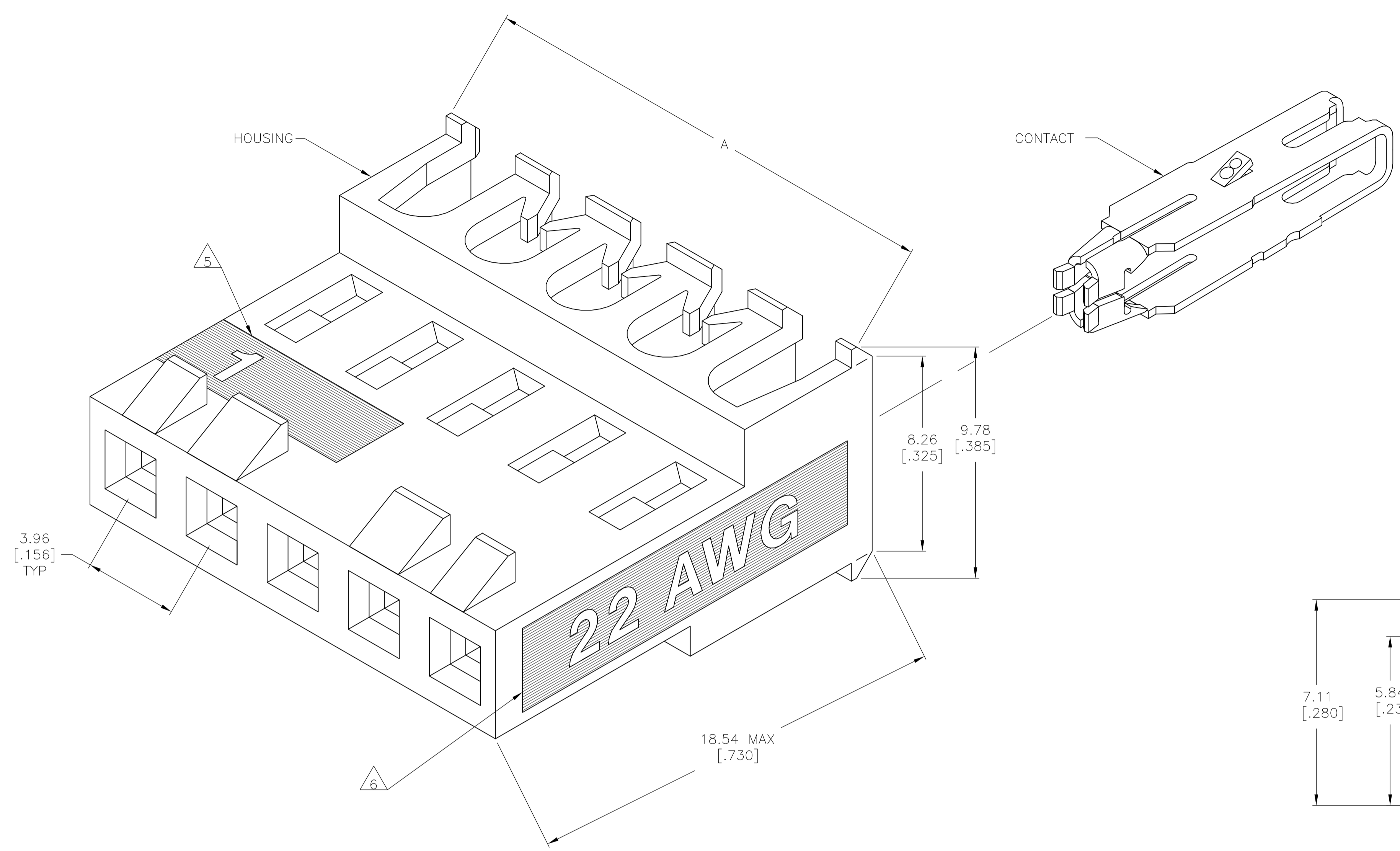


1. OPERATING TEMPERATURE: -55° C TO 105°C
2. MATERIAL: HOUSING, NYLON 6/6, UL 94V-0, BLACK
CONTACT, 0.30 [.012] THICK COPPER ALLOY
3. FINISH: BRIGHT TIN-LEAD PLATE 0.00203-0.00508 [.000080-.000200"] THICK OR MATTE WHISKER MITIGATED TIN 0.00203 [.000080] MIN THICKNESS OVER NICKEL UNDERPLATE.
4. LUBRICATED WITH AMP ANTI-FRETTING LUBRICANT.
5. IDENTIFICATION NUMBER FOR FIRST CIRCUIT.
6. WIRE GAUGE IDENTIFICATION
7. DIMENSIONS IN BRACKETS ARE IN INCHES.
8. CONTACT MUST ACCEPT 1.14±0.03 [.045±.001] SQUARE POST AND REMAINED LOCKED IN POSITION.



TIN	47.55±0.30	[1.872±.012]	12	4-644377-2
TIN	43.59±0.30	[1.716±.012]	11	4-644377-1
TIN	39.62±0.30	[1.560±.012]	10	4-644377-0
TIN	35.66±0.30	[1.404±.012]	9	3-644377-9
TIN	31.70±0.30	[1.248±.012]	8	3-644377-8
TIN	27.74±0.30	[1.092±.012]	7	3-644377-7
TIN	23.77±0.30	[.936±.012]	6	3-644377-6
TIN	19.81±0.30	[.780±.012]	5	3-644377-5
TIN	15.85±0.15	[.624±.006]	4	3-644377-4
TIN	11.89±0.15	[.468±.006]	3	3-644377-3
TIN	7.92±0.15	[.312±.006]	2	3-644377-2
FINISH	A		NO. OF CIRCUITS	PART NO.

TIN-LEAD	47.55±0.30	[1.872±.012]	12	1-644377-2
TIN-LEAD	43.59±0.30	[1.716±.012]	11	1-644377-1
TIN-LEAD	39.62±0.30	[1.560±.012]	10	1-644377-0
TIN-LEAD	35.66±0.30	[1.404±.012]	9	644377-9
TIN-LEAD	31.70±0.30	[1.248±.012]	8	644377-8
TIN-LEAD	27.74±0.30	[1.092±.012]	7	644377-7
TIN-LEAD	23.77±0.30	[.936±.012]	6	644377-6
TIN-LEAD	19.81±0.30	[.780±.012]	5	644377-5
TIN-LEAD	15.85±0.15	[.624±.006]	4	644377-4
TIN-LEAD	11.89±0.15	[.468±.006]	3	644377-3
TIN-LEAD	7.92±0.15	[.312±.006]	2	644377-2
FINISH	A		NO. OF CIRCUITS	PART NO.

METRIC

THIS DRAWING IS A CONTROLLED DOCUMENT.

DIMENSIONS: mm [INCHES]	TOLERANCES UNLESS OTHERWISE SPECIFIED:	0. PLC ± -	1. PLC ± -	2. PLC ± -	3. PLC ± 0.13 [.005]	4. PLC ± -	ANGLES ± -
-------------------------	--	------------	------------	------------	----------------------	------------	------------

DSN: C. MARTIN 23APR90 CHK: R. SWING 24APR90 APVD: G. MILLER 24APR90 PRODUCT SPEC: 108-1219 APPLICATION SPEC: 114-1048 WEIGHT: - MATERIAL: 2 FINISH: 3	Tyco Electronics Corporation Harrisburg, Pa 17105-3608 NAME: MTA-156 CONNECTOR ASSEMBLY, QUAD, 22 AWG, FEED THRU, WITH LOCKING RAMP SIZE: A1 CAGE CODE: 00779 DRAWING NO: 644377 RESTRICTED TO: - SCALE: 10:1 SHEET: 1 of 1 REV: E
---	---

CUSTOMER DRAWING